



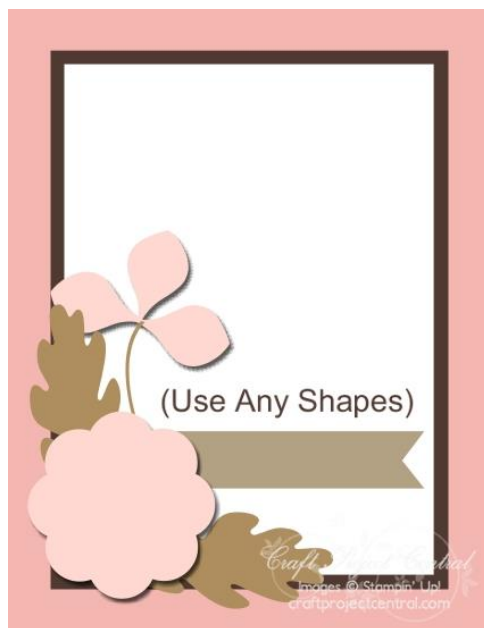
Creating Pretty Cards – Sketch Challenge #74

Designed By: Christy Fulk

August 2017

Our card challenges are here to be a source of inspiration, helping you create pretty cards easily! You're encouraged to let the creative spark take you wherever it goes: rotate the layout, change up the sizes, use different shapes or duplicate the sketch exactly.

To help you get started we've created this Mini Tutorial with measurement and cutting information as well as a recipe for our inspiration card. This is just a tiny glimpse of what you can expect from the monthly Craft Project Central Tutorials! We're looking forward to seeing what this sketch inspires you to create!



Instructions

Step 1

Cut one 8-1/2" x 5-1/2" piece of Night of Navy Cardstock. Fold the cardstock in half to form a 4-1/4" x 5-1/2" card base.

Step 2

Cut one 3-1/4" x 4-1/2" piece of Whisper White Cardstock and one 3-1/2" x 4-3/4" piece of *multi-color, circle paper* from the Naturally Eclectic Designer Series Paper (DSP). Using the Big Shot Die-Cutting Machine, die-cut the right side of the Whisper White piece using the *diamond-patterned background die* from the Eclectic Layers Thinlits Dies (Step 2a). Attach the Whisper White piece onto the center of the DSP piece (Step 2b).

Note: Use the following sandwich when die-cutting with detail dies: (starting from the bottom), Big Shot Platform, Thin Die Adapter, Precision Base Plate, cardstock, die, and Standard Cutting Pad. While the die-cut is still in the die, use the Big Shot Die Brush to remove the little pieces from it.

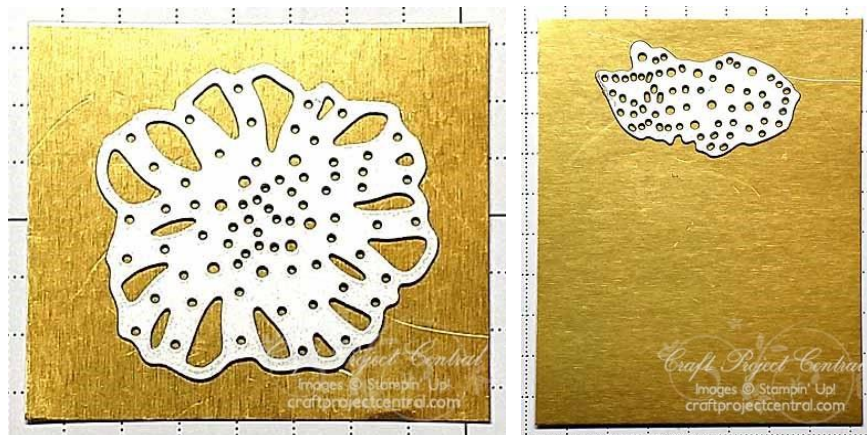


Step 2a

Step 2b

Step 3

Cut one 2" x 1-3/4" and one 2" x 2-1/2" piece of Gold Foil Sheets. Lay the *full-flower detail die* onto the center of the smaller Gold Foil Sheet, and run it through the Big Shot (Step 3a). Lay the *half-flower detail die* onto the top, center of the larger Gold Foil Sheet, and run it through the Big Shot (Step 3b). Refer to the Step 2 Note for die-cutting instructions.



Step 3a

Step 3b

Step 4

Lay the *full-flower frame die* around the detailed, full-flower die-cut in the Gold Foil, and run it through the Big Shot (Step 4a). Lay the flower part of the *half-flower with stem die* around the detailed, *half-flower die-cut* in the other piece of Gold Foil, and run it through the Big Shot (Step 4b). Both flowers should look like Step 4c when finished.

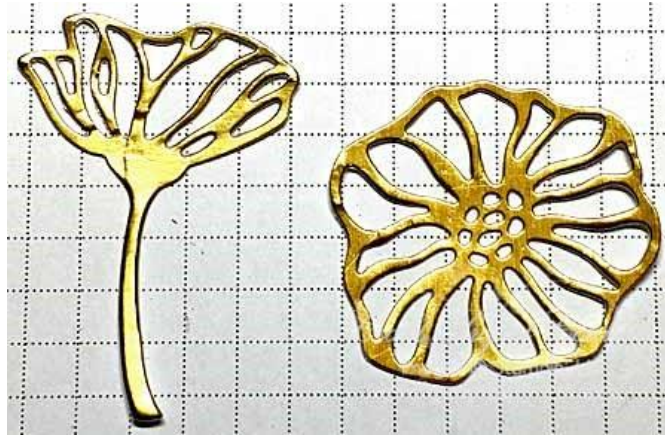
Note: Use the following sandwich when die-cutting with Framelit dies: (starting from the bottom), Magnetic Platform, Standard Cutting Pad, cardstock/paper, die, and Standard Cutting Pad.



Step 4a



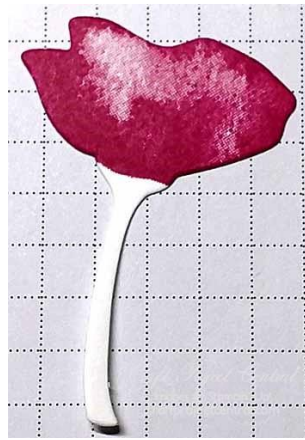
Step 4b



Step 4c

Step 5

Cut one 6" x 2-1/4" piece of Whisper White Cardstock and one 1-3/4" x 1" piece of Lemon Lime Twist Cardstock. Beginning from the left side of the Whisper White piece, stamp the *full-flower, bold stamp* onto the piece using the Berry Burst Classic Stampin' Pad. Then, stamp the *bold, leafy branch stamp*, next to the flower, two times using the Emerald Envy Classic Stampin' Pad. Stamp the *half-flower, bold stamp* next to the leafy branches, stamping it near the top of the cardstock. This will leave room for the stem when die-cutting. Die-cut the full-flower out with the *full-flower frame die*, die-cut the leafy branches out with the *leafy branch die*, and die-cut the half-flower out with the *half-flower with stem frame die*. Step 5a shows what the half-flower with stem should look like. Attach the Gold Foil die-cuts on top of their coordinating, stamped flower die-cuts using the Fine-Tip Glue Pen. Attach a *large gem* from the Gold Faceted Gems to the center of the full flower. Die-cut three little stems from the Lemon Lime Twist piece using the *little stem frame die*. Refer to the Step 4 Note when die-cutting all of the pieces in this step. Step 5b shows how all of the pieces should look.



Step 5a



Step 5b

Step 6

Put three Stampin' Dimensionals onto the back, center, of the full-flower (away from the edges of the flower), and attach it to the bottom, left corner of the Whisper White layer on the card. Attach the half-flower with stem above the full-flower using SNAIL Adhesive, making sure to tuck part of the stem under the full-flower (Step 6a). Attach one leafy branch above and one on the right side of the full-flower, tucking the stems under the full-flower. Stamp the "I like you" stamp onto a scrap piece of Soft Sky Cardstock using the Berry Burst ink pad. Punch the greeting out with the Classic Label Punch, making sure the greeting is a little to the right of the center. Attach the label to the right side of the flower, just above the right leafy branch. Make sure to tuck the left end of the label under the full-flower (Step 6b). Attach the small branches around the full flower using the Fine-Tip Glue Pen. Attach a *medium-sized rhinestone* from the Rhinestone Basic Jewels onto the center of each "diamond" flower in the die-cut background (Step 6c).



Step 6a



Step 6b



Step 6c

Stampin' Up! supplies are capitalized though out the tutorial so that you can quickly locate them in this Materials and Supplies list!

Materials:	Stampin' Up! Supplies:	Item #	Price
(1) 1-3/4" x 1" Lemon Lime Twist Cardstock	Oh So Eclectic Bundle – clear-mount	145356	\$47.50
(1) 8-1/2" x 5-1/2" Night of Navy Cardstock	Berry Burst Classic Stampin' Pad	144083	6.50
Scraps of Soft Sky Cardstock	Emerald Envy Classic Stampin' Pad	141396	6.50
(1) 3-1/4" x 4-1/2" Whisper White Cardstock	Lemon Lime Twist 8-1/2" x 11" Cardstock	144245	8.00
(1) 6" x 2-1/4" Whisper White Cardstock	Night of Navy 8-1/2" x 11" Cardstock	100867	8.00
(1) 3-1/2" x 4-3/4" Naturally Eclectic DSP	Soft Sky 8-1/2" x 11" Cardstock	131203	8.00
(1) 2" x 1-3/4" Gold Foil Sheets	Whisper White 8-1/2" x 11" Cardstock	100730	9.00
(1) 2" x 2-1/2" Gold Foil Sheets	Naturally Eclectic Designer Series Paper	144185	11.00
(1) Gold Faceted Gem	Gold Foil Sheets	132622	4.00
(6) Rhinestone Basic Jewels	Big Shot Die-Cutting Machine	143263	110.00
	Big Shot Brush	144262	12.50
	Magnetic Platform	130658	40.00
	Precision Base Plate	139684	25.00
	Classic Label Punch	141491	18.00
	Gold Faceted Gems	144141	5.00
	Rhinestone Basic Jewels	144220	5.00
	Fine-Tip Glue Pen	138309	7.00
	SNAIL Adhesive	104332	7.00
	Stampin' Dimensionals	104430	7.00